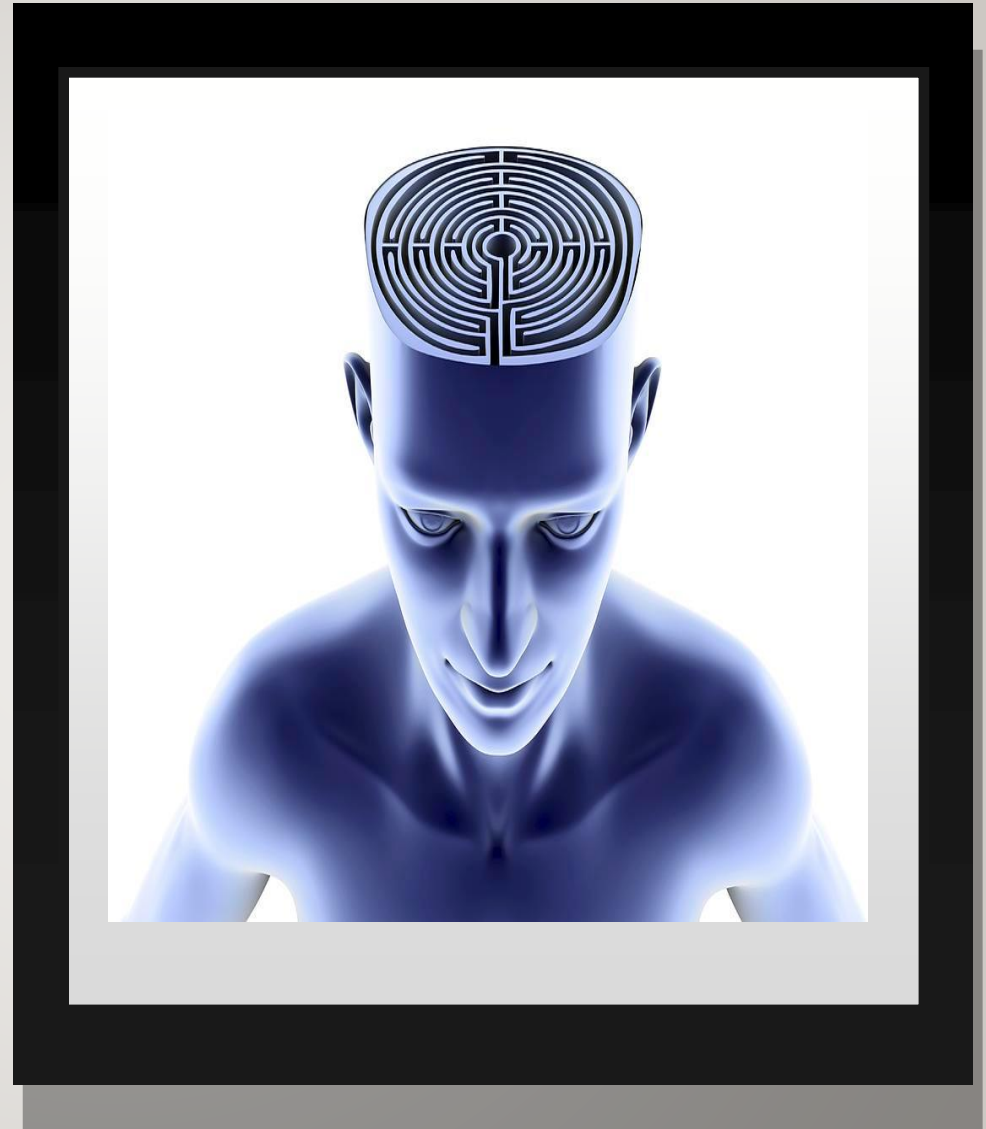


# MY FRIEND

---

- 29 year old lady with widespread paraesthesia and pain. UL and LL
- Non dermatomal
- Frequency bladder and bowel
- Previously well
- Symptoms worsening over 8 months



# MY DIFFERENTIAL DIAGNOSES

---

Vit D deficiency

B12/folate deficiency

Fibromyalgia

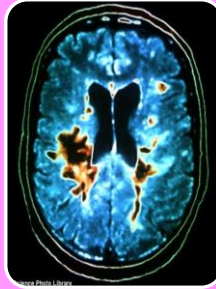
Hypothyroid

Multiple sclerosis

- Chronic pain
- Muscle aches
- Depression
- GI irritation
- Light headed
- Fasciculations
- Visual disturbance
- Tiredness/lethargy
- Paraesthesia

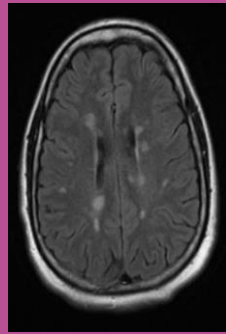
# MULTIPLE SCLEROSIS

---



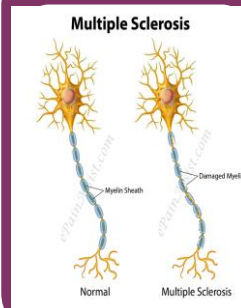
100K people in the UK have MS

5000 people diagnosed per year



14 people per day are diagnosed

1 in 600 people have MS

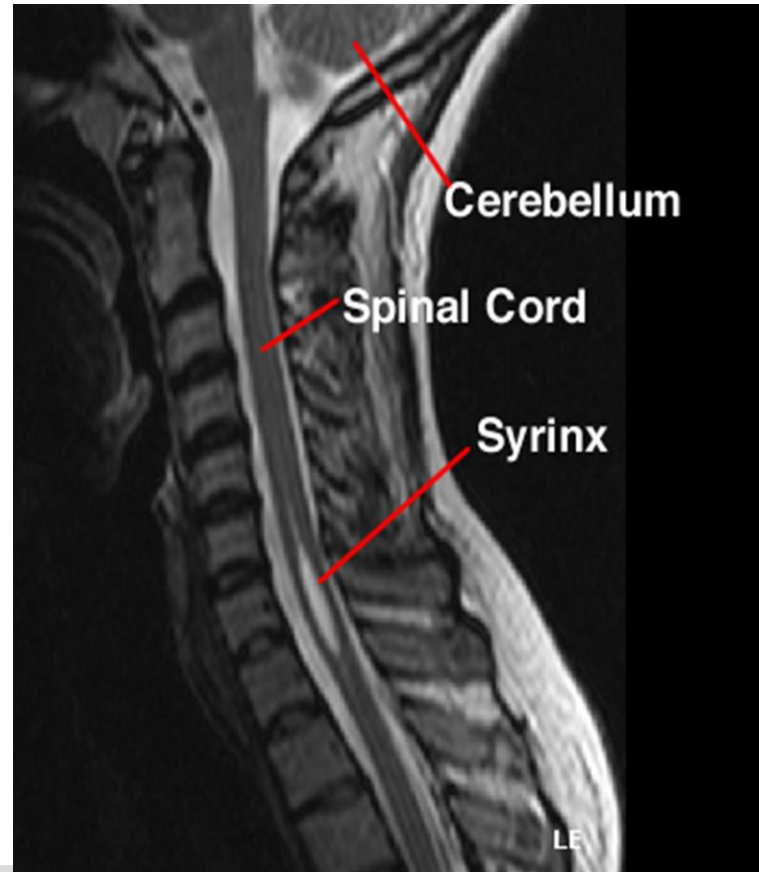


3:1 female-male affected

Most commonly diagnosed 40-50 years old

# SYRINX

---

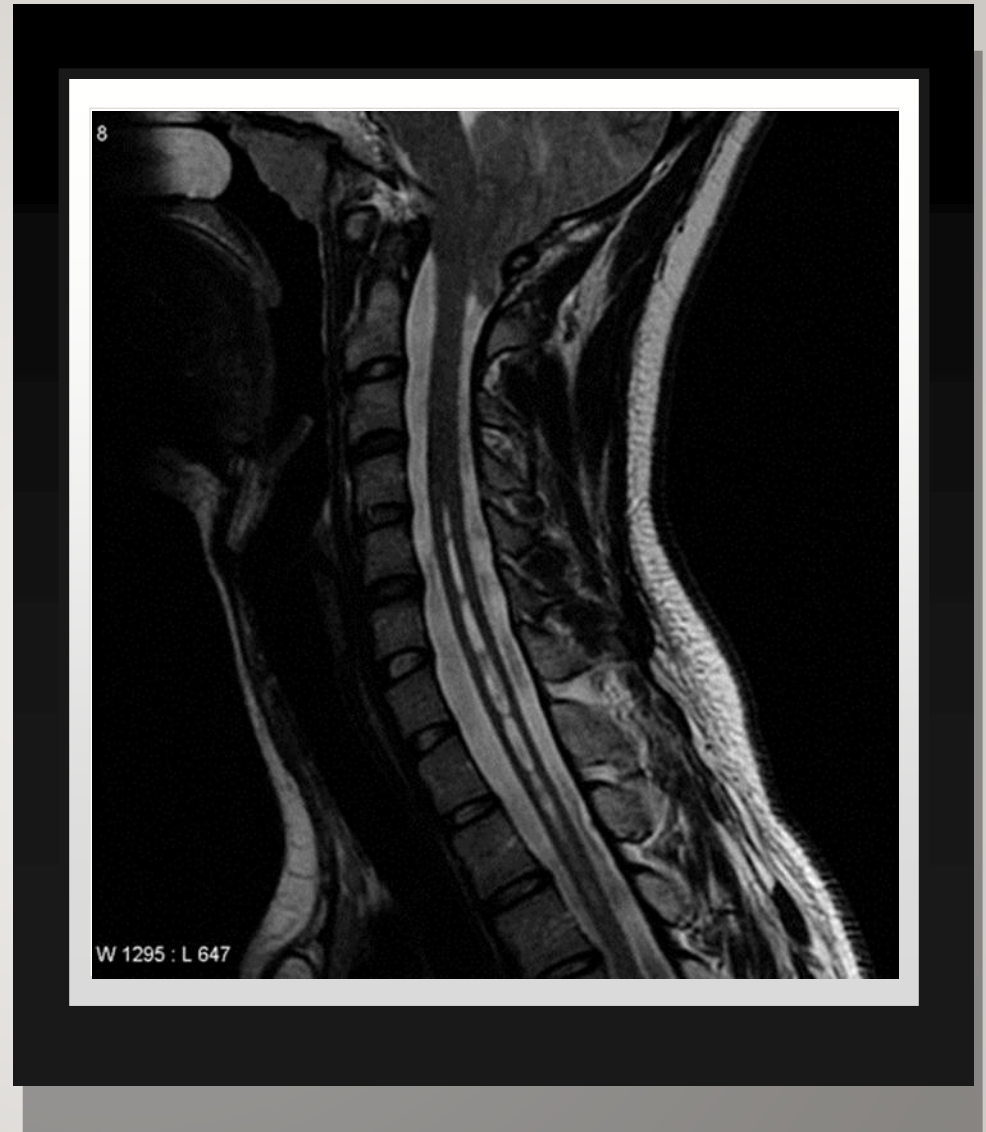




# SYRINX- INCIDENCE

---

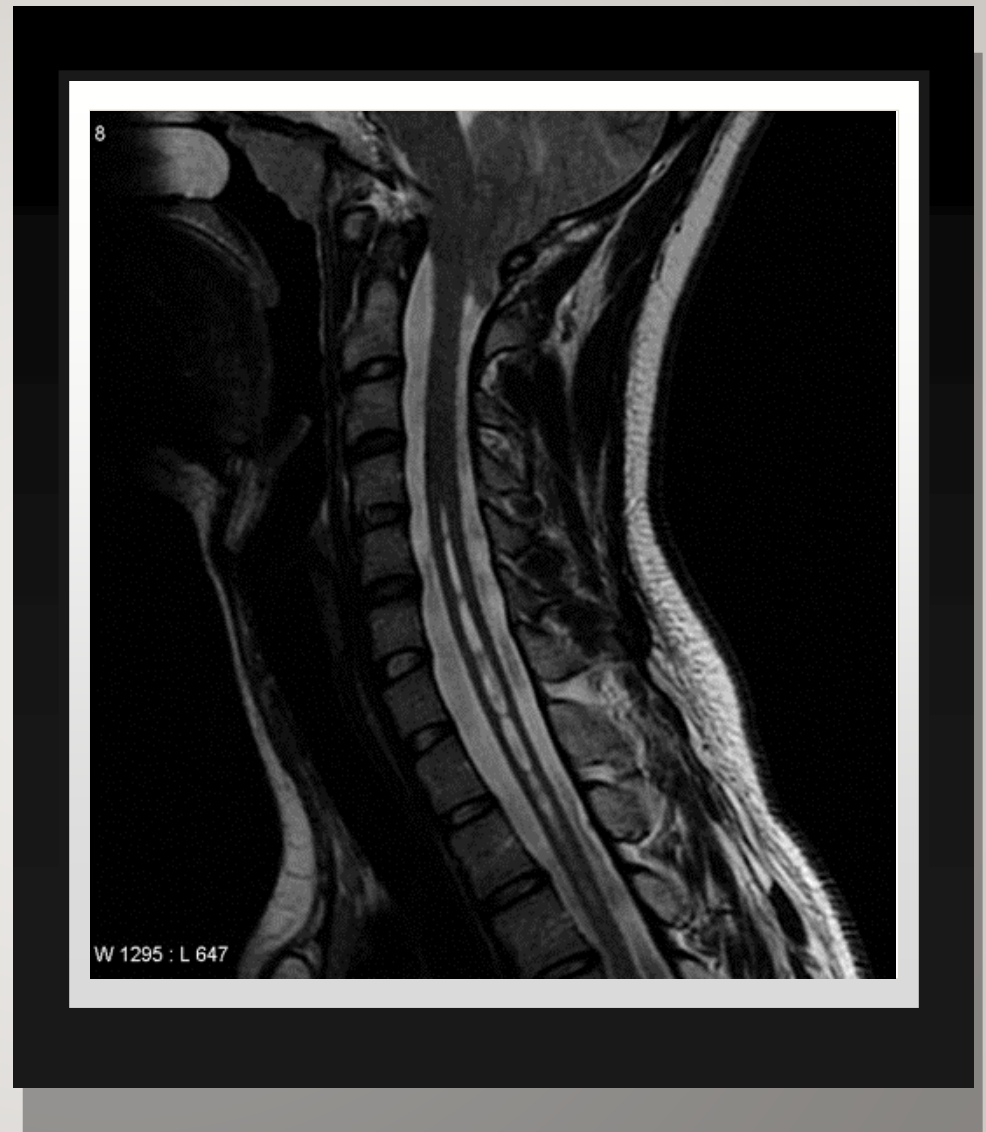
- 8.4/100,000 population
- Slightly more prevalent in men than women
- Usually found in 3<sup>rd</sup>-4<sup>th</sup> decade-average age 30
- If left alone 35-50% of people will live full life expectancy



# SYRINX- SIGNS AND SYMPTOMS

---

- Weakness
- Stiffness/tone changes
- Numbness/paraesthesia
- Pain
- Scoliosis
- **Bladder and bowel disturbance**
- Gait disturbance
- Loss of fine motor control



# SYRINX- CAUSES

---

- Hydrocephalus
- Chiari malformation
- Trauma
- Tethered cord
- Tumour
- Idiopathic
- Bony anomalies

